



# Hoe Tonga Winter Series – Race 1

## 23 May 2026

### Paraparaumu, Kapiti Island

### Ōtāki Waka Hoe

### Pānui 2

#### EVENT SUMMARY

Ōtāki Waka Hoe, alongside Hoe Tonga, warmly welcomes you to Race 1 of the Hoe Tonga Winter Series, to be held at Paraparaumu Beach in front of our beautiful motu of Kāpiti.

This event marks a special milestone as our first official race hosting as a club, and aims to bring together paddlers of all levels, from novice through to our most experienced, to enjoy a challenging and rewarding winter racing experience in front of our island.

The day will feature both short and long course racing, providing opportunities for all divisions to participate, connect, and compete in a supportive environment. With strong backing from our wider waka ama community, local partners, and mana whenua, we are committed to delivering a safe, inclusive, and memorable event.

We warmly invite you and your whānau to join us on the water and on the shore for what promises to be a great day of racing, connection, and whanaungatanga.

He waka eke noa

#### EVENT SCHEDULE 23 May 2026

7:00am	Venue and team registration open
8:00am	Safety boat briefing
8:30am	Karakia and briefing for race 1
9:00am	Start of short course (race 1)
9:45am	Briefing for race 2
10:45am	Start of long course (race 2)
12:30pm	Karakia Whakamutunga

#### RACE SCHEDULE

Time	Race
8.30am	Race Briefing - all races
9.00am	Race Start – 8-10km Wave 1 - W1, OC1, W2, OC2, W3
	Race Start – 8-10km Wave 2 - W6, W12
10.30am	Race Start – 18-20km



## RACE DAY INFORMATION



**Car Parking:** Parking is available by street parking or in the parking lot. Please note all parking is under Kapiti District Council you will need to read the signs and park accordingly.

**Trailer parking:** Trailer parking will be on the beach front, please follow the signs. This space is **only** available for cars carrying waka. **NO PUBLIC** parking on the beach

**Food:** We encourage you to bring your own healthy kai, however Kapiti Boating Club will be selling kai and beverages inside the club house to purchase.

**Toilets:** Toilets are located inside Kapiti Boating Club or next to the skate park

**First Aid:** First Aid will be available at the registration inside the Kapiti Boating club.

**Rubbish/Recycling:** We encourage you to please take what you bring.

**Alcohol/Smokefree:** Alcohol, smoking, vaping and any other substance use is not permitted at this event, including all premises of the event.

**Drone:** By attending this event, all participants and attendees acknowledge and provide their explicit consent to the operation of a Remotely Piloted Aircraft System (drone) directly overhead for the purposes of photography and filming, in accordance with CAA Part 101.79.

**Life Jackets:** **are mandatory for all J16 participants to wear on the day.** The race director will decide on the day whether all other participants are also required to wear life jackets.

## KAI TAUTOKO



**WAKA DROP OFF & SAFETY CHECKS**



**Waka Drop off: PLEASE SEE MAP ABOVE**

- Waka drop off will be available from 6.00am on the event day
- Waka drop off will be on the beach front landing and will be clearly signed.
- Trailer parking is on the beach front

**Safety Checks:**

- All waka will have to pass a safety check and be marked before racing. Any boats not marked will not be permitted to race.

**RACE RULES**

All entrants must be familiar with the Waka Ama Aotearoa New Zealand race and safety rules. Refer to the following link for more information: [Waka Ama Aotearoa NZ Race Rules](#)

**AGE DIVISIONS & RACE EVENTS**

WAKA	DISTANCE	DIVISIONS	GENDER
<b>W1,W2,W3 OC1, OC2</b>	8-10km	J16, J19, Open, Master, Senior Master, Golden Master	Men, Women, Mixed
<b>W6, W12</b>	8-10km	Novice, J16, J19, Open, Master, Senior Master, Golden Master	Men, Women, Mixed
<b>W6,W12</b>	18-20km	J19, Open, Master, Senior Master, Golden Master	Men, Women, Mixed



## FEES

### PER PERSON BY EVENT (charged for each event entered)

Event	Cost
J16 or J19 - W1, W2, OC1, OC2, W3 - 8-10km	\$20.00
J16 or J19 W6 - 8-10km	\$20.00
J19 W6 - 18-20km	\$20.00
2 events - J19 - 8-10km <b>and</b> 18-20km	\$30.00
Novice W6 - 8-10km	\$30.00
Open, Master, Snr Master, Gld Master - W1, W2, OC1, OC2, W3 - 8-10km	\$30.00
Open, Master, Snr Master, Gld Master - W6 - 8-10km	\$30.00
Open, Master, Snr Master, Gld Master - W6 - 18-20km	\$30.00
2 events - Open, Master, Snr Master, Gld Master - 8-10km <b>and</b> 18-20km	\$50.00

## ONLINE ENTRIES & PAYMENT

- Online entries are to be completed by your club admin using the Waka Ama Aotearoa NZ online entry system - contact your club admin to process your entry
- No entries on the day, no exceptions
- Entries close on **Friday 15<sup>th</sup> May 2026**
- Rosters close on **Wednesday 20<sup>th</sup> May 2026**, and must be completed, no exceptions
- Once entered, payment can be made online to:
  - Ōtāki Waka Hoe Charitable Trust
  - 06-0730-0325157-00
  - Use your club, team name and division as your reference
  - We ask for **ONE payment per Club** Individual team payments will be considered a donation. If you are paying for multiple crews, please follow up with an email to [otakiwakahoe@gmail.com](mailto:otakiwakahoe@gmail.com) advising your crew names, division 8km or 20km please.

## SAFETY REQUIREMENTS

- All waka must be Safety Checked
- All paddlers, Junior and Senior must have the following safety equipment for their races:
  - PFD - Personal Floation Device (per person)
  - Bailers
  - Flare or cellphone in waterproof case
  - Spare Paddle - 2 for a W6, 1 for W1/2
  - Spray Skirt (W6)
  - Tow Rope (W6)
  - Leg leash (for sit on top W1)

## INDIVIDUAL & TEAM WAIVERS

- Individual and Team waivers must be completed by all paddlers/teams
- All paddlers U18 must have their waiver signed by their parent/guardian
- Waivers can be sent to [otakiwakahoe@gmail.com](mailto:otakiwakahoe@gmail.com) or handed in at the managers meeting on the day
- Individual & Team waivers can be found on our event page on the [Waka Ama Aotearoa NZ website](http://Waka Ama Aotearoa NZ website)



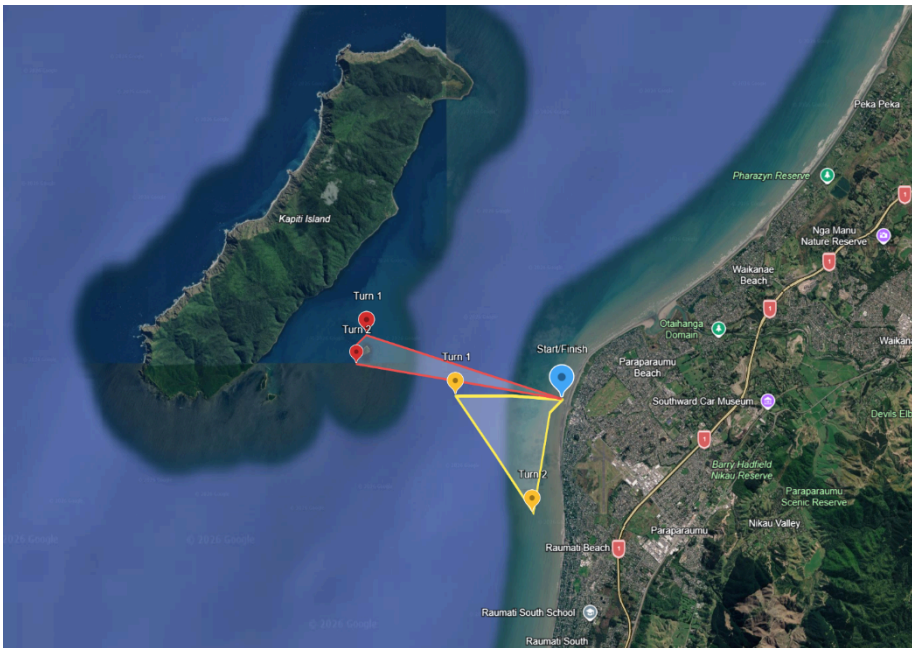


### CONTACT INFORMATION

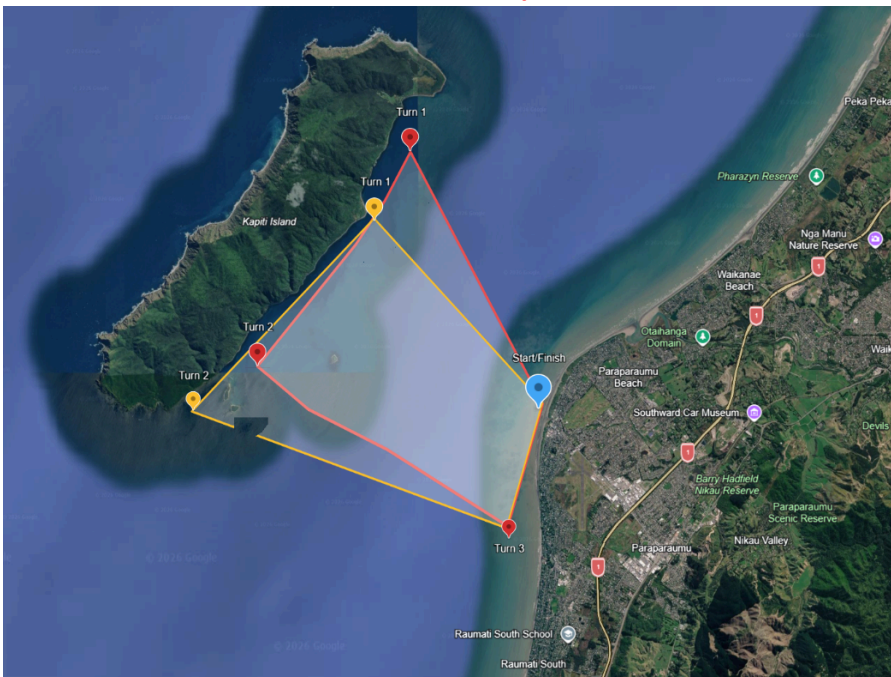
- All enquiries please email: [otakiwakahoe@gmail.com](mailto:otakiwakahoe@gmail.com)
- All urgent matters please message:
  - Noti Henare – Event Manager 02102534399
  - Ani Suitauloa – Race Director 0211045873
  - Te Wera Henare – Safety Boat Manager 02041535732

### COURSE MAPS

#### 8-10km RED Main Course, YELLOW back up



#### 18-20km RED Main Course, YELLOW back up



- High tide: 3.00pm

Low tide: 8.40am